



KINTSUGI

new dialogues between art and matter

FIORANESE
CERAMICA



UN MONDO
POLIEDRICO
DI SUGGESTIONI
MATERICHE E
ARTISTICHE

UN MONDO POLIEDRICO
DI SUGGESTIONI MATERICHE E ARTISTICHE

Suggerimenti mutevoli e raffinate, proprie della cultura giapponese, aprono nuovi dialoghi per l'abitare contemporaneo.

L'arte di ricomporre è la delicata lezione simbolica suggerita dall'antica arte del Kintsugi: riunire frammenti attraverso linee di congiunzione per donare all'opera una nuova estetica. Una morbida materia cemento incontra la luminosa brillantezza del metallo.

Sovrapposizioni di graniglie e smalti danno vita a segni luminescenti, a inserti ricchi di matericità e spessore in grado di offrire una maggiore profondità alle superfici e soluzioni formali nuove, con cui caratterizzare ambienti accoglienti e non convenzionali.

Creatività, determinazione e fiducia: si può valorizzare positivamente ogni esperienza ed esibirla, rendendola unica e preziosa.

EINE VIELFÄLTIGE WELT VOLL ANREGUNGEN VOM
MATERIAL UND AUS DER KUNST

Die für die japanische Kultur typischen veränderlichen und raffinierten Anregungen stellen sich neuen Dialogen für das zeitgenössische Wohnen.

Die Kunst des Wiederaussetzens ist die zarte symbolische Lektion, die uns die alte Kunst des Kintsugi vorschlägt: Fragmente über Verbindungslinien zu kombinieren, um dem Kunstwerk eine neue Ästhetik zu verleihen. Ein weicher Zement begegnet dem strahlenden Glanz des Metalls.

Die Überlagerung von Kies und Glasuren bringt leuchtende Zeichen und Einsätze mit starker Materialwirkung und Stärke hervor, die in der Lage sind, den Oberflächen und formellen neuen Lösungen eine größere Tiefe zu verleihen, um behagliche, unkonventionelle Umgebungen zu prägen. Kreativität, Entschlossenheit und Vertrauen: Jede Erfahrung kann positiv ausgewertet und zur Schau gestellt werden, sodass sie zu etwas einmaligen und kostbaren wird.

A MULTIFACETED WORLD
OF MATERIAL AND ARTISTIC INFLUENCES

Changing and sophisticated influences, typical of Japanese culture, open up new dialogues for contemporary living.

The art of putting pieces back together is the delicate symbolic lesson inspired by the ancient art of Kintsugi: piecing together fragments along connecting lines, giving a new look to the work.

A soft concrete material meets the brilliance and shine of metal. Grits and glazes overlap to create luminescent patterns and inserts rich in texture and consistency, giving greater depth to surfaces and creating new forms that foster welcoming and unconventional environments.

Creativity, determination and confidence: every experience can be valued and exhibited in a positive way, giving it a unique, precious allure.

UN MONDE POLYÉDRIQUE FAIT DE
SUGGESTIONS MATIÉRISTES ET ARTISTIQUES

Des suggestions changeantes et raffinées, propres à la culture japonaise, ouvrent de nouveaux dialogues pour l'habitation contemporaine.

L'art de recomposer est la délicate leçon symbolique suggérée par l'art antique du Kintsugi : réunir des fragments à travers des lignes de jonction pour donner à l'œuvre une esthétique nouvelle. Une matière douce en ciment rencontre la brillance lumineuse du métal.

Des superpositions de granilles et d'émaux donnent naissance à des signes luminescents et à des insertions riches de matière et d'épaisseur en mesure d'offrir une plus grande profondeur aux surfaces et des solutions formelles nouvelles pouvant caractériser des espaces accueillants et non conventionnels.

Créativité, détermination et confiance: il est possible de valoriser positivement chaque expérience et de l'exhiber, en la rendant unique et précieuse.



KINTSUGI 2021

KINTSUGI 2021

HIBI FOG 60,4x120,8 - 24"x48"
Naturale/Rettificato - Matte/Rectified



KINTSUGI 2021

SUGGESTIONI MUTEVOLI E RAFFINATE

CHANGING AND REFINED INFLUENCES
VERÄNDERLICHE UND RAFFINIERT ANREGUNGEN
DES SUGGESTIONS CHANGEANTES ET RAFFINÉES

HIBI FOG 60,4x120,8 - 24"x48"
Naturale/Rettificato - Matte/Rectified



KINTSUGI 2021



KINTSUGI 2021

KINTSUGI 2021

DARKNESS 60,4x60,4 - 24"x24"
HIBI DARKNESS 60,4x120,8 - 24"x48"
Naturale/Rettificato - Matte/Rectified



MOONLIGHT 90x90 - 36"x36"
Naturale/Rettificato - Matte/Rectified

VENATURE METALLICHE PER AMBIENTI NON CONVENZIONALI

METALLIC VEINS FOR UNCONVENTIONAL ENVIRONMENTS
METALLISCHE ÄDERUNGEN FÜR UNKONVENTIONELLE UMGEBUNGEN
DES VEINURES MÉTALLIQUES POUR DES ESPACES NON CONVENTIONNELS

MOONLIGHT 60,4x60,4 - 24"x24"
HIBI MOONLIGHT 60,4x120,8 - 24"x48"
Naturale/Rettificato - Matte/Rectified





KINTSUGI 2021

KINTSUGI 2021

HIBI STORM 60,4x120,8 - 24"x48"
Naturale/Rettificato - Matte/Rectified



HIBI STORM 60,4x120,8 - 24"x48"
Naturale/Rettificato - Matte/Rectified



KINTSUGI 2021

KINTSUGI 2021

JAPAN-HIBI STORM 60,4x60,4 - 24"x24"
Naturale/Rettificato - Matte/Rectified

JAPAN BLACK 20,13x20,13 - 8"x8"
Lucido/Rettificato - Glossy/Rectified



JAPAN-HIBI DARKNESS 60.4x60.4 - 24"x24"
Naturale/Rettificato - Matte/Rectified



KINTSUGI 2021

UN EFFETTO CEMENTO MORBIDO E VERSATILE

SOFT AND VERSATILE CONCRETE-EFFECT
EINE WEICHE, VIELSEITIGE ZEMENTOPTIK
UN EFFET DOUX ET VERSATILE

FOC 60,4x60,4 - 24"x24"
Naturale/Rettificato - Matte/Rectified

KINTSUGI 2021



MITOBI 2021

MITOBI 2021

FOG 60,4x60,4 - 24"x24"
Naturale/Rettificato - Matte/Rectified
JAPAN BLUE 20,13x20,13 - 8"x8"
Lucido/Rettificato - Glossy/Rectified

GIOCHI DI LUCE E COLORE PER SUGGESTIONI NUOVE ED INFORMALI

LIGHT AND COLOUR EFFECTS FOR NEW AND INFORMAL INFLUENCES
SPIELE MIT LICHT UND FARBE FÜR NEUE, UNKONVENTIONELLE ANREGUNGEN
DES JEUX DE LUMIÈRE ET DE COULEUR POUR DES SUGGESTIONS NOUVELLES ET
INFORMELLES

HIBI FOG 60,4x60,4 - 24"x24"
Naturale/Rettificato - Matte/Rectified





JAPAN WHITE 20.13x20.13 - 8"x8"
Lucido/Rettificato - Glossy/Rectified

KINTSUGI 2021



FOG 20.13x20.13 - 8"x8"
Naturale/Rettificato - Matte/Rectified
JAPAN-MIX RUST 20.13x20.13 - 8"x8"
Lucido/Rettificato - Glossy/Rectified

KINTSUGI 2021



UNA MAGGIORE PROFONDITÀ PER SUPERFICI INEDITE

GREATER DEPTH FOR BRANDNEW SURFACES
EINE HÖHERE TIEFE FÜR BRANDNEUE OBERFLÄCHEN
UNE PLUS GRANDE PROFONDEUR POUR DES SURFACES INÉDITES

STORM 60,4x60,4 - 24"x24"
Naturale/Rettificato - Matte/Rectified

JAPAN-MIX B&W 20,13x20,13 - 8"x8"
Lucido/Rettificato - Glossy/Rectified

KINTSUGI

gres porcellanato **body-color**



MOONLIGHT



FOG

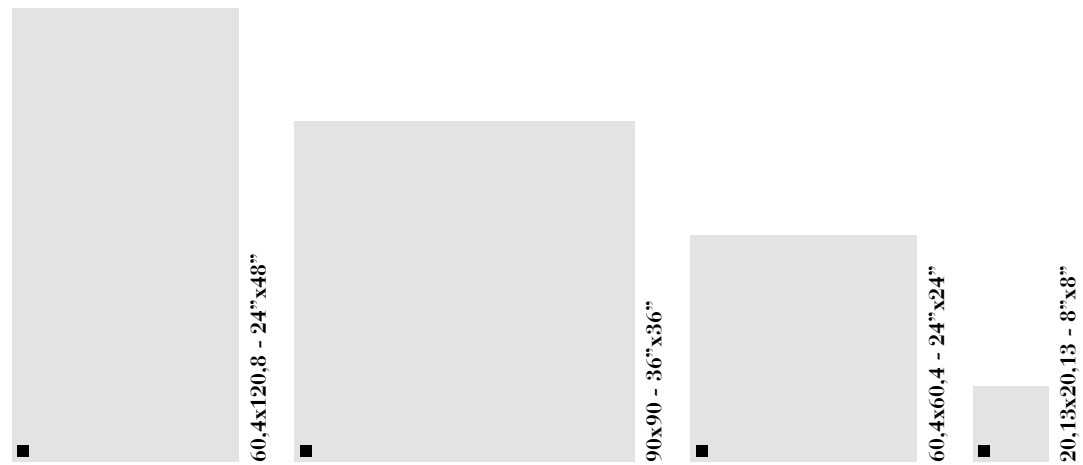


STORM



DARKNESS

Formati disponibili
Available sizes - Verfügbare Formate - Formats disponibles

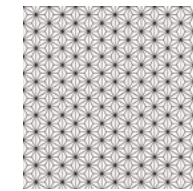


■ **Naturale/Rettificato**
Matte/Rectified
Matt/Rektifiziert
Matt/Rectifié

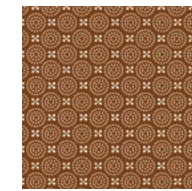
KINTSUGI

gres porcellanato +

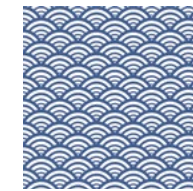
JAPAN 20,13x20,13 - 8''x8'' +



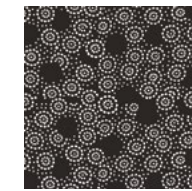
WHITE



RUST

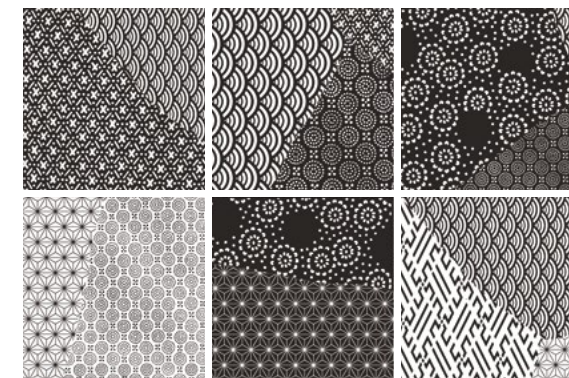


BLUE

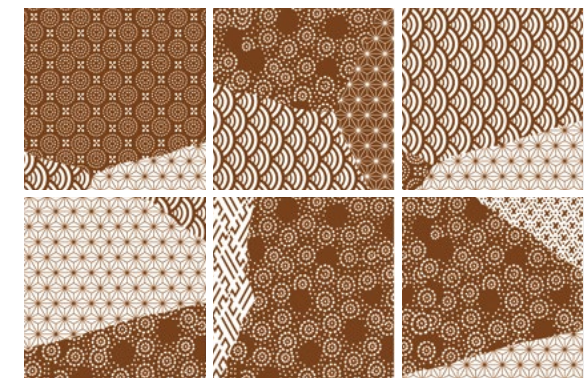


BLACK

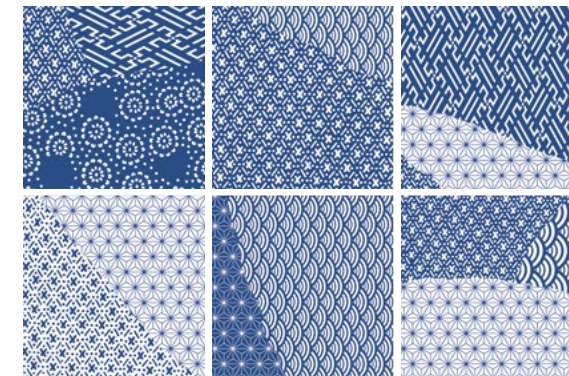
JAPAN-MIX 20,13x20,13 - 8''x8'' + (18 soggetti assortiti)



B&W



RUST



BLUE

Formati disponibili
Available sizes - Verfügbare Formate - Formats disponibles



■ **Lucido/Rettificato**
Glossy/Rectified
Glänzend/Rektifiziert
Brillant/Rectifié

KINTSUGI

gres porcellanato **body-color**

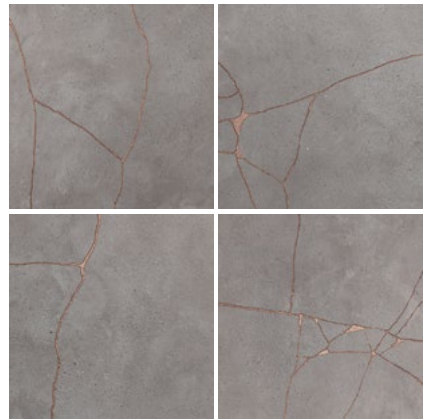
Hibi



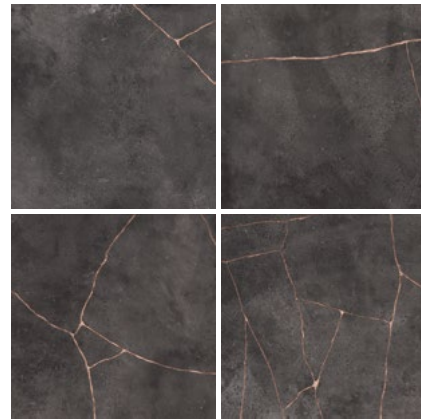
MOONLIGHT



FOG



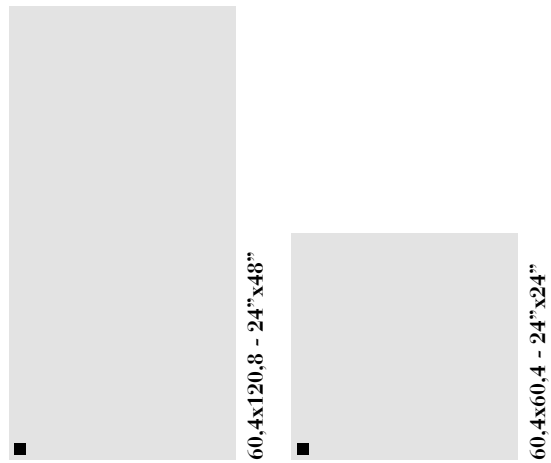
STORM



DARKNESS

KINTSUGI 2021

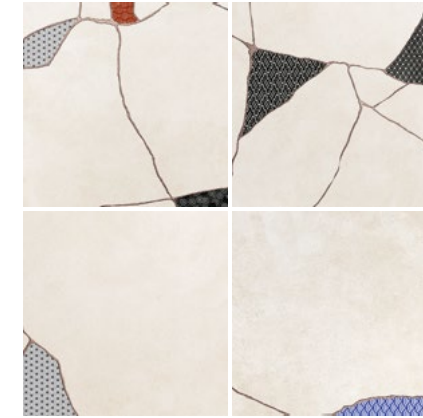
Formati disponibili
Available sizes - Verfügbare Formate - Formats disponibles



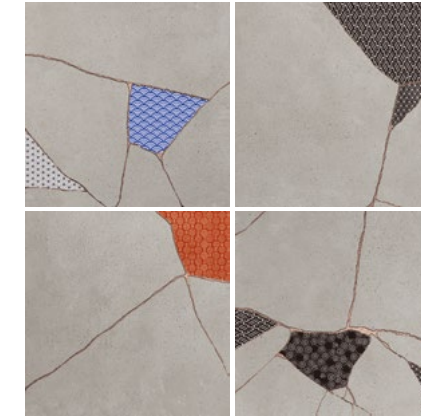
MATTER₀NTOP

■ **Naturale/Rettificato**
Matte/Rectified
Matt/Rektifiziert
Matt/Rectifié

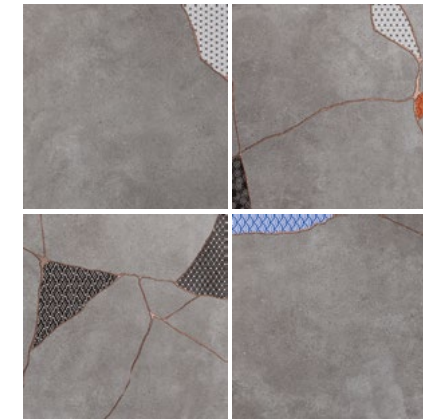
Japan-Hibi



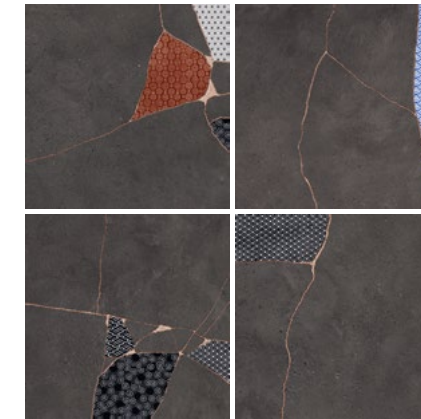
MOONLIGHT



FOG



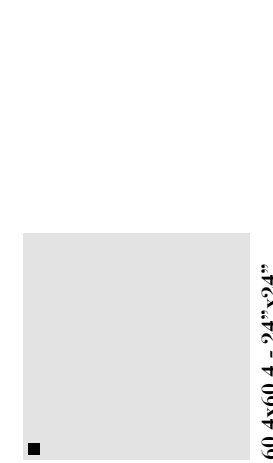
STORM



DARKNESS

KINTSUGI 2021

Formati disponibili
Available sizes - Verfügbare Formate - Formats disponibles




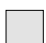



MATTER₀NTOP




■ **Naturale/Rettificato**
Matte/Rectified
Matt/Rektifiziert
Matt/Rectifié

KINTSUGI

gres porcellanato **body-color**



| Formato Size Format Format | Articolo Item Artikel Article | Naturale/Rettificato Matte/Rectified Matt/Rektifiziert Matt/Rectifié | Scatole | | | Pallet | | | Spessore Thickness Stärke Épaisseur |
|-------------------------------------------------------------------------------------------------------------------------------------------------------|----------------------------------------|-------------------------------------------------------------------------------|-------------------------------------------|-----------------------------------------------------|---------------------------------------|-------------------------------------|-----------------------------------|----------------|----------------------------------------------|
| | | | PZ/SC Pcs/Box Stck/Ktn Pcs/Boîte | MQ/SC Sqm/Box Qm/Ktn M ² /Boîte | KG/SC Kg/Box Kg/Ktn Kg/Boîte | COLLI Boxes Kartons Boîtes | MQ Sqm Qm M ² | KG Kg Kg | |
|  90x90 - 36"x36" | Moonlight Fog Storm Darkness | KT901R KT903R KT907R KT900R | 2 | 1,62 | 36,6 | 20 | 32,4 | 742 | 10 mm |
|  60,4x120,8 - 24"x48" | Moonlight Fog Storm Darkness | KT621R KT623R KT627R KT620R | 2 | 1,46 | 31,5 | 35 | 51,10 | 1112 | 10 mm |
|  60,4x60,4 - 24"x24" | Moonlight Fog Storm Darkness | KT601R KT603R KT607R KT600R | 4 | 1,46 | 31,5 | 30 | 43,8 | 955 | 10 mm |
|  20,13x20,13 - 8"x8" | Moonlight Fog Storm Darkness | KT201R KT203R KT207R KT200R | 27 | 1,0935 | 24 | 68 | 74,358 | 1642 | 10 mm |
|  7,5x60,4 - 3"x24" Battiscopa - Bullnose Sockel - Plinthe | Moonlight Fog Storm Darkness | KTB601R KTB603R KTB607R KTB600R | 22 | ML 13,288 | 22 | | | | |

KINTSUGI 2021

| Formato Size Format Format | Articolo Item Artikel Article | Naturale/Rettificato Matte/Rectified Matt/Rektifiziert Matt/Rectifié | Scatole | | | Pallet | | | Spessore Thickness Stärke Épaisseur |
|-----------------------------------------------------------------------------------------------------------------------|----------------------------------------|-------------------------------------------------------------------------------|-------------------------------------------|-----------------------------------------------------|---------------------------------------|-------------------------------------|-----------------------------------|----------------|----------------------------------------------|
| | | | PZ/SC Pcs/Box Stck/Ktn Pcs/Boîte | MQ/SC Sqm/Box Qm/Ktn M ² /Boîte | KG/SC Kg/Box Kg/Ktn Kg/Boîte | COLLI Boxes Kartons Boîtes | MQ Sqm Qm M ² | KG Kg Kg | |
|  HIBI 60,4x120,8 - 24"x48" | Moonlight Fog Storm Darkness | KTH621R KTH623R KTH627R KTH620R | 2 | 1,46 | 31,5 | 35 | 51,10 | 1112 | 10 mm |
|  HIBI 60,4x60,4 - 24"x24" | Moonlight Fog Storm Darkness | KTH601R KTH603R KTH607R KTH600R | 4 | 1,46 | 31,5 | 30 | 43,8 | 955 | 10 mm |
|  JAPAN-HIBI 60,4x60,4 - 24"x24" | Moonlight Fog Storm Darkness | KTJ601R KTJ603R KTJ607R KTJ600R | 4 | 1,46 | 31,5 | 30 | 43,8 | 955 | 10 mm |

KINTSUGI

gres porcellanato +

| Formato Size Format Format | Articolo Item Artikel Article | Lucido/Rettificato Glossy/Rectified Glänzend/Rektifiziert Brillant/Rectifié | Scatole | | | Pallet | | | Spessore Thickness Stärke Épaisseur |
|--------------------------------------------------------------------------------------------------------------------------------------------------|----------------------------------------|--------------------------------------------------------------------------------------|-------------------------------------------|-----------------------------------------------------|---------------------------------------|-------------------------------------|-----------------------------------|----------------|----------------------------------------------|
| | | | PZ/SC Pcs/Box Stck/Ktn Pcs/Boîte | MQ/SC Sqm/Box Qm/Ktn M ² /Boîte | KG/SC Kg/Box Kg/Ktn Kg/Boîte | COLLI Boxes Kartons Boîtes | MQ Sqm Qm M ² | KG Kg Kg | |
|  JAPAN 20,13x20,13 - 8"x8" | White Rust Blue Black | KTJA201 KTJA205 KTJA206 KTJA207 | 27 | 1,0935 | 24 | 68 | 74,358 | 1642 | 10 mm |
|  JAPAN MIX 20,13x20,13 - 8"x8" (18 soggetti assortiti)* | B&W RUST BLUE | KTJX201 KTJX205 KTJX206 | 27 | 1,0935 | 24 | 68 | 74,358 | 1642 | 10 mm |

* Non è garantito un numero minimo di soggetti differenti all'interno di una scatola.
Minimum number of assorted patterns in each box not guaranteed.
Eine Mindestanzahl von unterschiedlichen Subjekten in einer Schachtel kann nicht garantiert werden.
Une quantité minimum de sujets différents dans une même boîte ne peut être garantie.

EN 14411:2012 ANNEX G GROUP BIa GL

gres porcellanato **body-color**

| PAVIMENTO Floor coverings Bodenbeläge Sol | RIVESTIMENTO Wall coverings Wandbeläge Faïence | RESIDENZIALE Residential areas Wohngebiete Zones résidentielles | TRAFFICO LEGGERO Light traffic areas Geringe Begehungsfrequenz Zones à trafic léger |
|----------------------------------------------------|---------------------------------------------------------|--------------------------------------------------------------------------|----------------------------------------------------------------------------------------------|
| R9 Naturale | BCRA Naturale DRY: > 0,40 WET: > 0,40 | DCOF* Naturale WET ≥ 0.42 | |



Piastrelle con media variazione di tono e disegno
Tiles with moderate shade and aspect variation
Fliesen mit gemäßigt unterschiedlichen Tonalitäten und Muster
Carreaux avec faible différence de nuance et structure



Piastrelle con variazione random di tono e disegno
Tiles with random shade and aspect variation
Fliesen mit zufällig unterschiedlichen Tonalitäten und Muster
Carreaux avec différence aléatoire de nuance et structure

MATTERonTOP



* Valido solo per i fondi non decorati - Valid for plain base tiles only - Nur für nicht dekorierte Grundfliesen gültig - Valable seulement pour les fonds non décorés

EN 14411:2012 ANNEX G GROUP BIa GL

gres porcellanato +

| PAVIMENTO Floor coverings Bodenbeläge Sol | RIVESTIMENTO Wall coverings Wandbeläge Faïence | RESIDENZIALE Residential areas Wohngebiete Zones résidentielles |
|----------------------------------------------------|---------------------------------------------------------|--------------------------------------------------------------------------|
| | | |



Piastrelle con lieve variazione di tono e disegno
Tiles with slight shade and aspect variation
Fliesen mit leicht unterschiedlichen Tonalitäten und Muster
Carreaux avec faible différence de nuance et structure



La finitura Lucido/Rettificato è indicata anche per pavimenti, ma soltanto in aree soggette a calpestio da traffico ordinario, protette da agenti abrasivi, in cui è già avvenuto un primo scarico di sporco normale tramite scale, preingressi, zerbini. | The Glossy/Rectified finish is also suitable for floors, but only in areas subject to ordinary traffic, protected by abrasive agents, in which normal dirt has already been left behind on stairs, areas before the entrance, doormats, etc. | Die Glänzend/Rektifiziert Oberflächenausführung ist auch für Fußböden geeignet, aber nur in Bereichen mit normaler Trittbelastung, die vor scheuernden Substanzen geschützt sind, in denen bereits der erste gewöhnliche Schmutz auf Treppen, in Vorräumen oder auf Fußmatten abgeladen wurde. | La finition Brillant/Rectifié est indiquée pour les sols aussi, mais uniquement dans des zones soumises à un piétinement courant et protégées par des agents abrasifs, où a déjà eu lieu un premier dépôt de saleté normale par le biais d'escaliers, de seuils d'entrée et de paillasons.



FIORANESE
CERAMICA

41042 Fiorano Modenese (MO) Italy
Via Cameazzo, 25 - Tel. (+39) 0536.99.35.11
Fax Italia 0536.99.35.56 - Fax Export (+39) 0536.83.26.11
www.fioranese.it - info@fioranese.it